

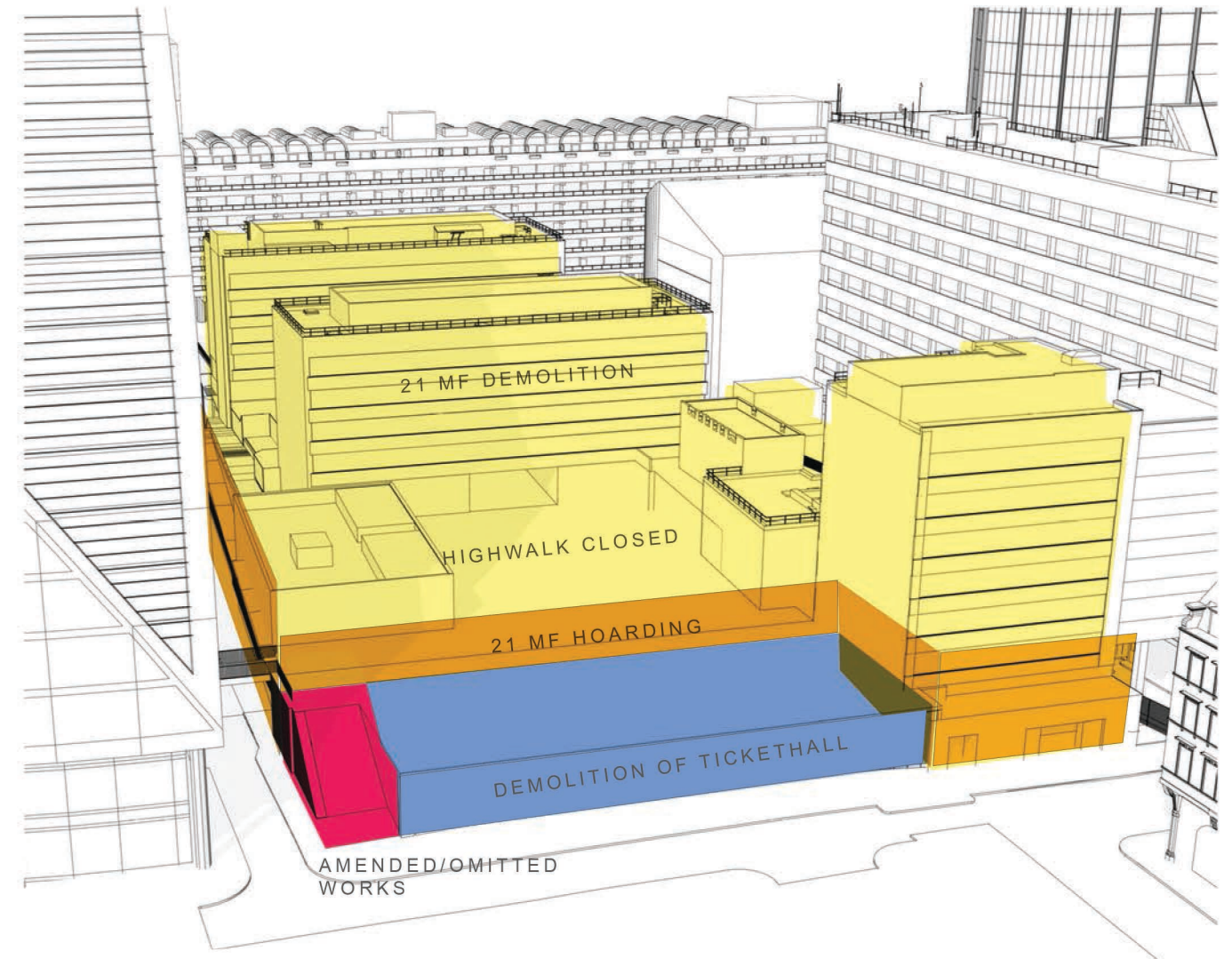
January 2016 - Current Proposal

- 1) Escalators installed + commissioned as per Crossrail design. **Handover to CoL**
- 2) Moorgate LUL ticket hall demolition commences JUNE 2015
- 3) 21 MF hoarding up + Demolition in progress - HIGHWALK CLOSED (from June 2015)

Implications

- A) Escalators are blocked until 21 MF project completion Jan 2019
- B) 1 Year warranty on Escalators commences
- C) Escalators installed to incorrect levels and spec for permanent condition and therefore need to be replaced
- D) Escalators aesthetically unsuitable for permanent condition

21 Moorfields - 0873-SK-805 REV 01 - Wilkinson Eyre
 25|03|2015 CRL Escalators - Permanent Condition Diagram
 NTS

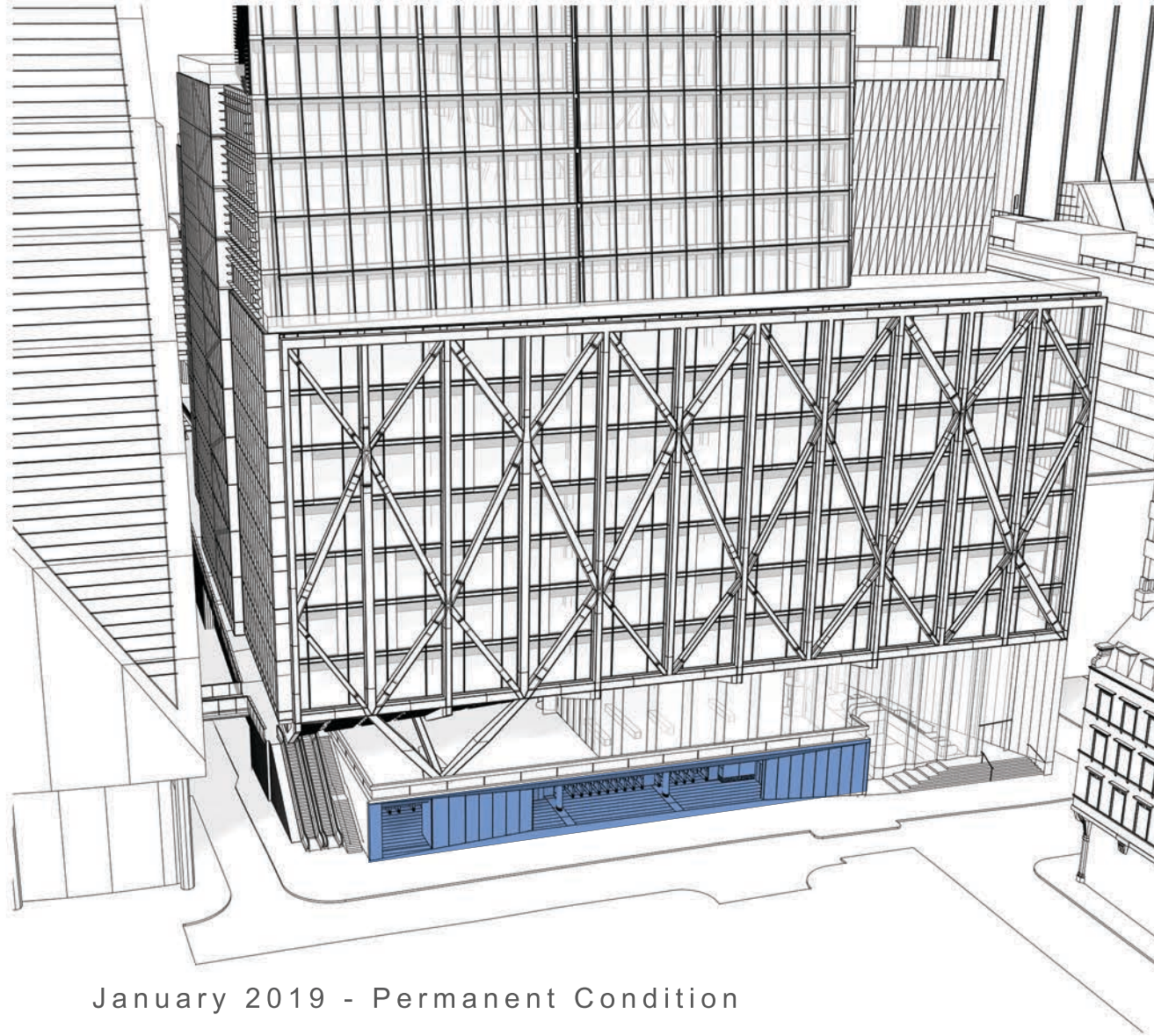


January 2016 - Preferred Solution

- 1) Escalators, cladding and canopy omitted from Crossrail scope of works
- 2) Cost of omitted works transferred to LS
- 3) Obligation to CoL to provide escalators transferred to LS
- 4) Crossrail ticket hall and existing highwalk demolition timing not restricted by commissioning of escalators
- 5) 21 MF hoarding up + Demolition in progress - HIGHWALK CLOSED

Implications

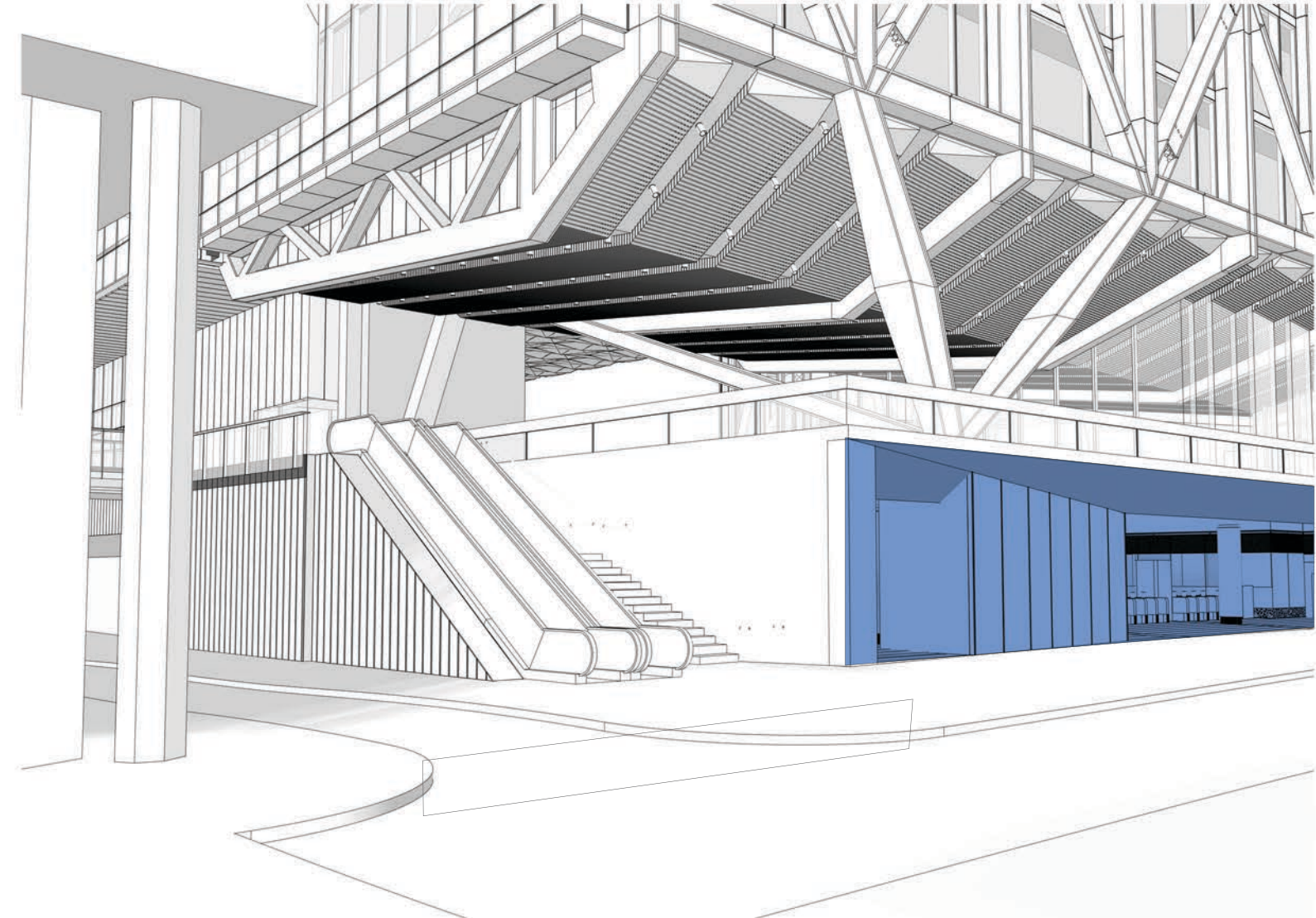
- A) Area of works omitted or amended suitably waterproofed and protected for the duration of the project construction
- B) Escalators can be redesigned to suit permanent condition levels, spec and aesthetic requirements
- C) Warranty period for escalators commences at project completion when new highwalk opens



January 2019 - Permanent Condition

- 1) 21 Moorfields and Crossrail Ticket Hall completed
- 2) Escalators installed + commissioned to correct levels, spec and aesthetic quality
- 3) New Highwalk opens

21 Moorfields - 0873-SK-806 - Wikinson Eyre
 10 | 02 | 2015 CRL Escalators - Permanent Condition Diagram
 NTS



January 2019 - Permanent Condition

- 1) Visually high quality escalators that provide an appropriate connection to the Highwalk
- 2) Good sight lines to new retail arcade and reception areas are established, an important aspect which is critical to the success of the development